

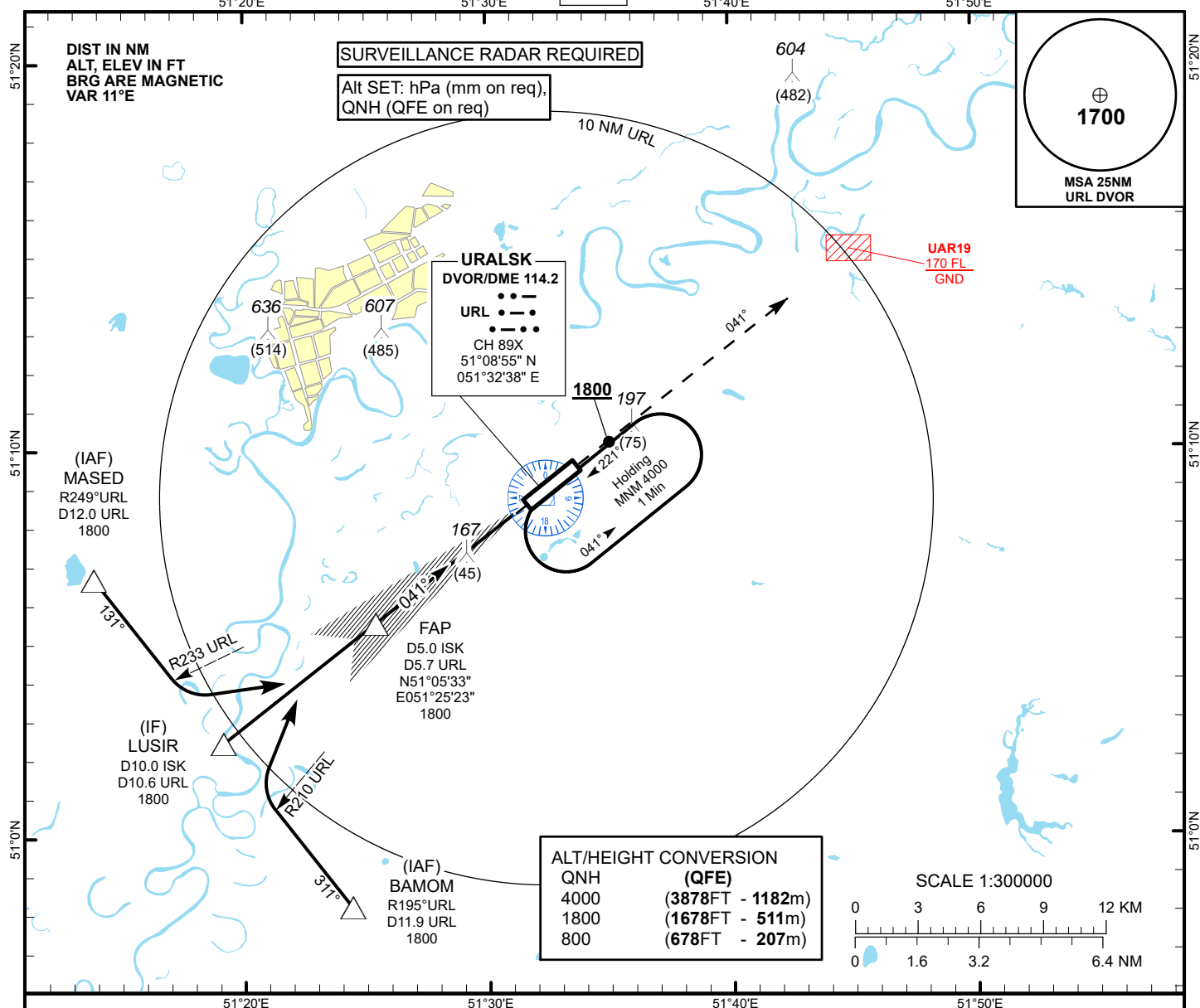
INSTRUMENT
APPROACH
CHART - ICAO

AERODROME ELEV 128 FT
HEIGHTS RELATED TO
THR RWY04 - ELEV 122 FT

ILS
LLZ 111.3
ISK
GP 332.3
CH 50X

URALSK TOWER 119.7
URALSK ATIS (EN) 124.8
URALSK ATIS (RU) 134.9

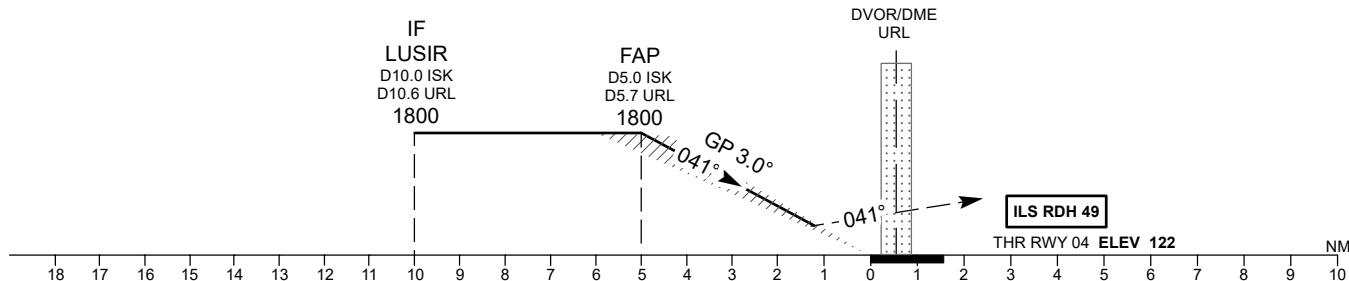
URALSK
ILS/DME
RWY 04



TRANSITION ALT
10000

MISSED APPROACH

Climb on track 041° to 1800 ft.
After passing 1800 ft radar
vectoring will be provided.



Aircraft Category		A	B	C	D	DIST to THR DME ISK	NM	5	4	3	2	1	
Straight-in Approach OCA/H						DME URL	NM	5.7	4.7	3.7	2.7	1.7	
	CAT I	322(200)	323(201)	333(211)	343(221)	ALTITUDE	FT	1800	1462	1138	815	494	
						HEIGHT	FT	1678	1340	1016	693	372	
DME ISK ZERO RANGED TO THR RWY 04													
Aerodrome Operating Minima DH ft x RVR(CMV)	CAT I												
						GS	Kt	80	100	120	140	160	180
						Desc.Rate(5.2%)	ft/min	420	530	630	740	840	950

URALSK
ILS/DME

AERONAUTICAL DATA TABULATION

ILS approach to RWY04 from MASED, LUSIR, BAMOM	
Fix/point	Coordinates
DVOR/DME URL	51° 08' 55.2"N 051° 32' 37.6"E
(FAP) D5.0 ISK, D5.7 URL	51° 05' 33.0"N 051° 25' 23.2"E
LUSIR (IF) D10.0 ISK, D10.6 URL	51° 02' 29.0"N 051° 19' 11.3"E
MASED (IAF) R249°, D12.0 URL	51° 06' 44.0"N 051° 13' 54.6"E
BAMOM (IAF) R195°, D11.9 URL	50° 58' 13.8"N 051° 24' 27.0"E
THR RWY04	51° 08' 39.45"N 051° 31' 41.38"E
LOC ISK	51° 09' 49.1"N 051° 34' 03.3"E